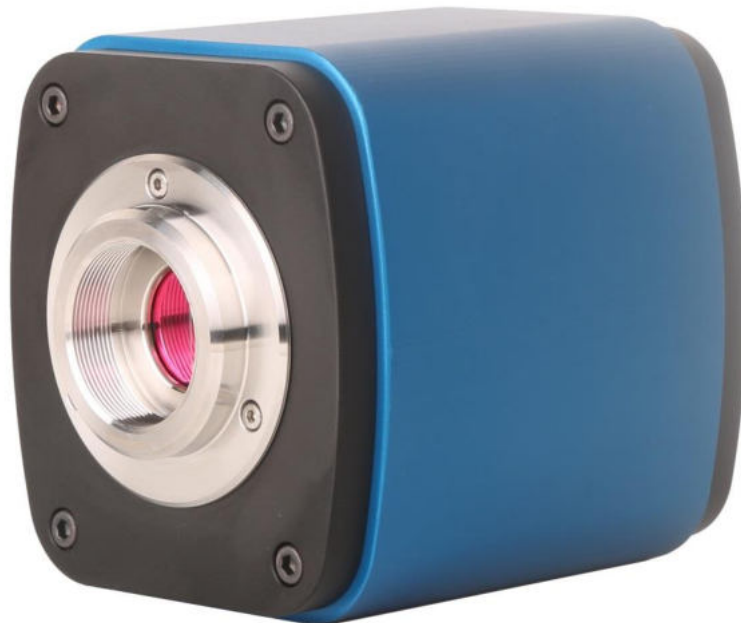


XCAM Series HDMI Camera

XCAM1080PHX's Basic Characteristic

- All in 1(HDMI+USB+SD card) C-mount camera with Sony high sensitivity CMOS sensor;
- Simultaneous HDMI & USB output;
- Built-in mouse control;
- Built-in image capture & video record to SD card;
- Built-in camera control panel, including exposure(manual/auto)/gain, white balance(lockable), color adjustment, sharpness and denoising control;
- Built-in toolbar including zoom, mirror, comparison, freeze, cross, browser functions;
- Built-in image & video browsing, display & play;
- Ultra-Fine color engine with perfect color reproduction capability(USB);
- With advanced video & image processing application ToupView, which including professional image processing such as 2D measurement, HDR, image stitching, EDF(Extended Depth of Focus), image segmentation & count, image stacking, color composite and denoising(USB);
- Support standard UVC for Windows/Linux/Mac(USB);
- CNC shell molding design;



XCAM1080PHX Datasheet

| Order Code | Sensor | Size(mm) | Pixel(μm) | FPS/Resolution | Binning | Exposure |
|------------------------|-------------|-----------------|------------------------|--|---------|-------------|
| XCAM1080PHA XP1080A | Sony IMX236 | 1/2.8"(5.5x3.4) | 2.8x2.8 | 60@1920X1080P(HDMI) 30@1920X1080(USB) | 1x1 | 0.1ms~999ms |

Interface & Button Functions



| | |
|--------|-------------------------|
| USB | USB Camera or USB Mouse |
| HDMI | HDMI Output |
| DC12V | 12V Power in |
| SD | SD Card Slot |
| ON/OFF | Power On/off Switch |

Other Specification for HDMI Output

| | |
|----------------------|--|
| UI Operation | With USB Mouse |
| Image Capture | High Speed in SD Card(8G) |
| Video Record | 1080P 30fps in SD Card(8G) |
| Camera Control Panel | Including Exposure, Gain, White Balance, Color Adjustment, Sharpness and Denoising Control |
| Toolbar | Including Zoom, Mirror, Comparison, Freeze, Cross, Browser Function |

Other Specification for USB Output

| | |
|---------------------|---|
| White Balance | Auto White Balance |
| Color Technique | Ultra-Fine™ Color Engine (USB) |
| Capture/Control API | Standard UVC for Windows/Linux/Mac(USB) |
| Recording System | Still Picture or Movie (USB) |

Software Environment (for USB2.0 Connection)

| | |
|------------------|---|
| Operating System | Microsoft® Windows® XP / Vista / 7 / 8 / 8.1(32 & 64 bit) OSx(Mac OS X) Linux |
| PC Requirements | CPU: Equal to Intel Core2 2.8GHz or Higher |
| | Memory:4GB or More |
| | USB Port:USB2.0 High-speed Port |
| | Display:19" or Larger |
| | CD-ROM |

Operating Environment

| | |
|---------------------------------------|-------------------|
| Operating Temperature(in Centidegree) | -10~ 50 |
| Storage Temperature(in Centidegree) | -20~ 60 |
| Operating Humidity | 30~80%RH |
| Storage Humidity | 10~60%RH |
| Power Supply | DC 12V/2A Adaptor |

Packing List

| | |
|--|--|
| | 1.XCAM1080PHA Camera 2.USB Mouse 3.HDMI Cable 4.USB2.0 Cable 5.12V AC Power Adapter 6.CD Including ToupView, Manual and SDK 7.SD Card (Optional) |
|--|--|

Overall Dimensions

| | |
|------------------------|--|
| Width x Depth x Height | 78 mm (3.07") x 70 mm (2.76") x 92mm (3.62") |
| Shipping Weight | 0.47 kg (1.0lbs) |

HDMI Camera and Microscope



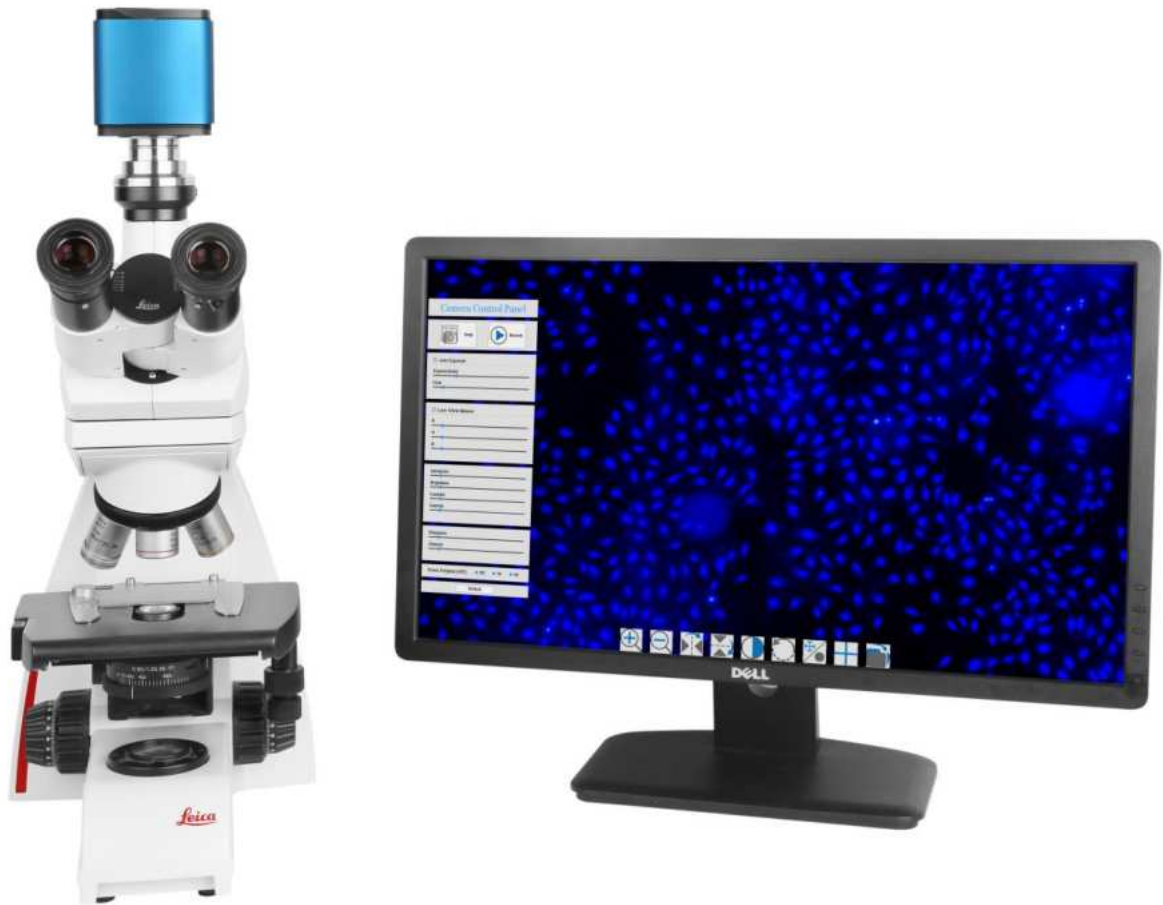
Different Views of HDMI



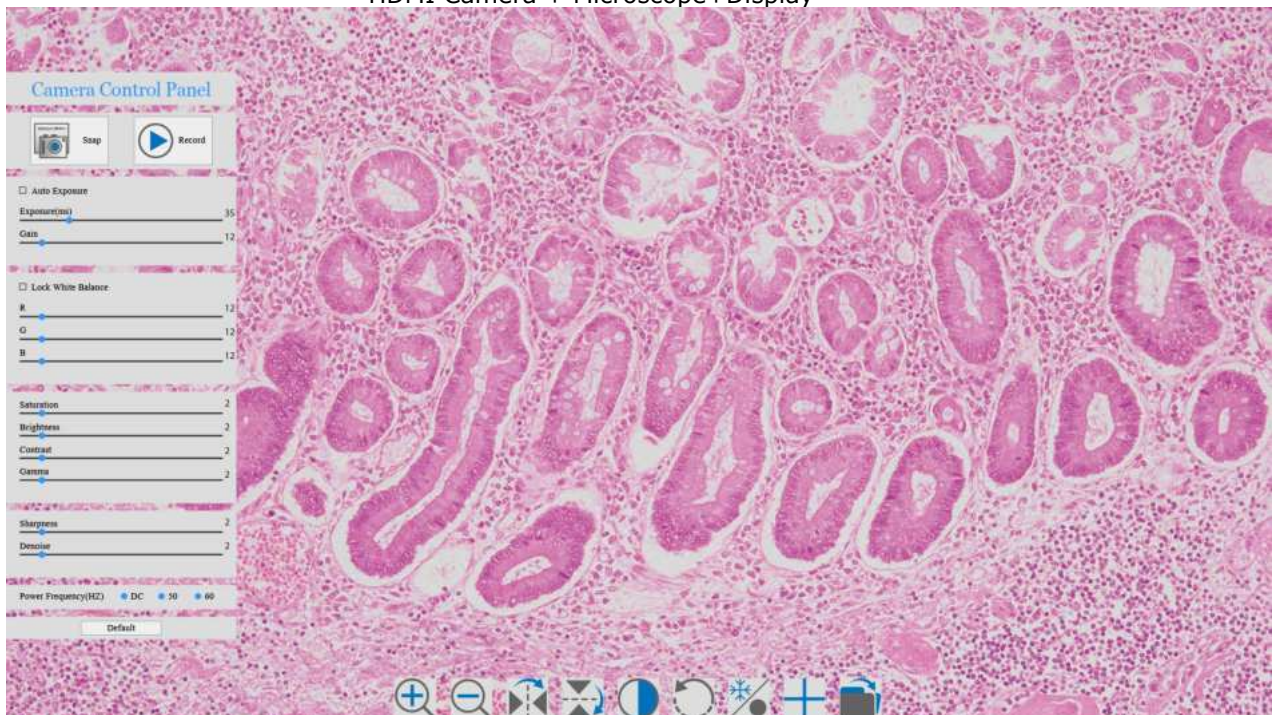
HDMI C-mount Camera and Its Back Panel



HDMI Camera and Microscope



HDMI Camera + Microscope+Display



HDMI camera UI for Mouse Control

Possible Application

- Scientific research, education (teaching, demonstration and academic exchanges);
- Digital laboratory, medical research;
- Industrial visual (PCB examination, IC quality control);
- Medical treatment (pathological observation);
- Food (microbial colony observation and counting);
- Aerospace, military (high sophisticated weapons);